

The Wy'east Beacon

A Welcoming Unitarian Universalist Congregation

Whoever you are,
Wherever you come from
You are welcome here

Wy'east [*Wy'east' : Ancient name for Mount Hood*] WWW.WYEASTUU.ORG

July/August 2010

What's Inside?

Wy'east
Potluck Picnic
...Page 2...

Hymn Singing
...Page 4...

Wy'east Special
Collections
...Page 5...

Wy'east is now at the
**Hollywood
Senior Center** at
1820 NE 40th,
Portland.

The **parking lot of
the U.S. Bank**
around the corner is
available for Wy'east
on Sundays. That's at
the corner of Northeast
41st Avenue and
Hancock Street. Please
make use of it!

From the Board ♦♦♦

What's Cooking?

This is the last Board Column from the Wy'east Board of 2009-2010. For three of us – Alex, Elizabeth, and Mark – our terms are over. And for three others – Dan, Hank, and Liana – their terms are just beginning. The transition – not just of responsibility, but also of intention – has been smooth. The new members have been to several meetings of the old; what has been on the front burner recently isn't going away. In fact, we all have been invited to turn up the heat.

(Continued on page 2)

Sunday Sermons

7/4	Potluck Picnic at Grant Park	Wy'east Members & Friends
7/11	The Courage to Live Life	Sarah Schurr
7/18	Intergenerational Service: The World of Friendship	Elizabeth Suh
7/25	Wy'east Presents...	Readers' Theatre
8/1	In Praise of Crisis	Kristen Dillon
8/8	Poetry Circle	Mark Alter & Maureen Geraghty
8/15	Where We Live	Wy'east Members & Friends
8/22	Intergenerational Service: Moving Free	Wy'east Members & Friends
8/29	Music through the Ages	Hank Hadaway

(For Sermon Details, See "2 Months Of Sundays", On Pages 9 & 10)

From the Board *(continued)*

What's cooking? ... In Reverend Susan's recipe for Wy'east's success, the single strongest ingredient has been spiritual growth, not growth by the numbers. This dish isn't leaving the menu. Susan has seen it as the Board's responsibility – and opportunity – to lead by example in our spiritual kitchen, and the June meeting included just this stove-side conversation. Which serving we choose is not the issue: whether walking meditatively in the city, learning from an indigenous teacher, or practicing right relations – all are true, noble paths, and sources of awareness. Wisdom is everywhere. The moral beacon that Wy'east becomes is only as bright as its members' candlepower of practice.

And putting that good energy to work in the world together – through social action, social justice – is the natural outcome of our individual intentions. This congregation is already known for its compassion and generosity. We will become more so with the emergence of a new community practice and presence. You are invited to shine your light with ours.

– *Mark A.*

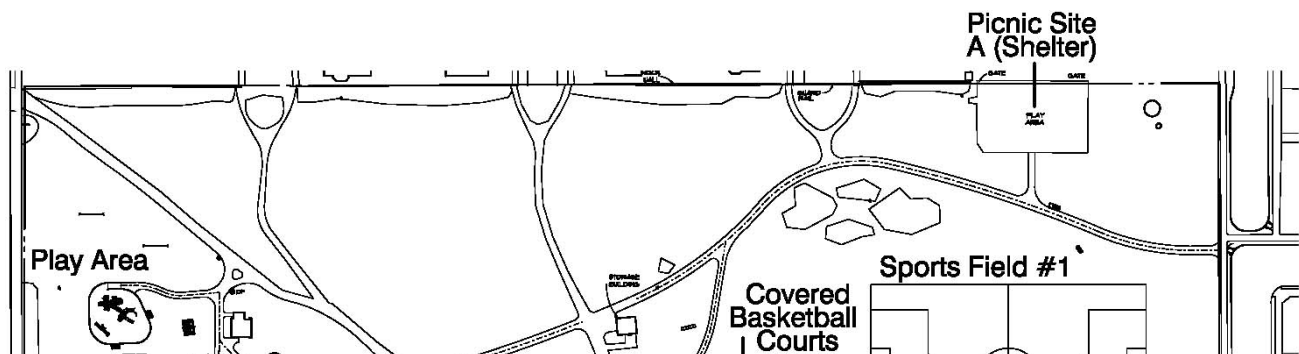


Wy'east Potluck Picnic

On **July 4**, join us at 10:30 am for a picnic potluck at the shelter in **Grant Park**, NE 36th & Brazee, about 6 blocks from the Senior Center.

Some notes about our space at Grant Park:

- ◆ There are no barbecue grills at the park, but you may bring one if it is 6" or more above the ground.
 - ◆ There are no tables or chairs at the shelter. Please let us know if you can bring some. You may also bring blankets to put on the lawn.
 - ◆ There is no water faucet, but some jugs of water will be available.
 - ◆ We encourage you to bring your own plates and utensils from home, but paper plates and plastic utensils will also be available.
 - ◆ If your potluck dish requires serving utensils, please bring them.
 - ◆ We must take any trash with us (bags will be provided).
 - ◆ Parking is available on 36th Avenue. We will be at site "A." For an online map, go to: <http://tinyurl.com/nvea6v>
- Questions? Please see Brooke CT.





Teacher Annie's Last Day

Religious Education

It's summer time and Wy'east Religious Education (RE) has kicked into summer camp mode (Wy'Camp). This is a time when our congregation gives to our children and ourselves by getting together and having a good time, after 9 months of hard work. As I write this letter, the RE committee is preparing an end-of-the-year party for all the children, roughly 15 this year. We will be asking the children to look back and share the highlights of this past year. I am eager to hear what they will remember. I am using this time to look back myself – to one year ago when I attended my first committee meeting, ever. I was just getting a glimpse into how our program operates, who our volunteers and teachers are, and how everyone works to make RE something more than a place to keep our children busy while we as adults attend service.

When I stepped into my leadership role last August, I made up a list of goals and ideas for RE. It included items such as getting the children connected to the web of giving and support Wy'east has established; connecting with members of Wy'east who don't have children in our program; teaching sustainability; and

examining how we use and share resources as a congregation, and in our individual families.

I have to extend a congregation-wide “Thank You” for helping us to make each of these dreams a reality. Those of you who donated to our holiday fundraiser for Goose Hollow Family Shelter not only helped to teach our children about their power to give, but also about the power of community. To those of you without children who volunteered to teach, to visit, or to share a story, you've helped to demonstrate to the children, in person, what a congregation is made of, and that is people who care. Finally, I offer a special thanks to Annie Haifley, our erstwhile DRE. Her idea to make our last fundraiser a “plant and recycled craft sale” gave our children a wonderful opportunity – not only the experience of raising seedlings, and transforming landfill-bound items into useful, beautiful planters and votive holders, but also the experience of actively



supporting a member of our own congregation, Amy Earhart, in her efforts to bring medical care to children across the globe in Kenya through the Imani Project.* These experiences

have the power to change how our children view not just their role in the Wy'east Congregation, but also their place in a changing world.

Understand that while my initial “idea list” is unfinished, our list of accomplished items is longer – too long to cover in this letter. You'll have to drop in to Wee Works where our committee meets, or attend a Children's Chapel service, or say hello to one of our kids or committee members, or join hands to make an arch and sing the children to their classes – to find out all we are doing.

Liana A.

Committee Chair for RE

**For more information about the Imani Project, visit: www.imaniproject.org*

Getting Connected @ Wy'east

Get your name in the **directory** and on the Wy'east **email list** (not heavy traffic but a great way to stay informed about all sorts of good stuff) by contacting Hanna.nelson@gmail.com.

Join the Wy'east Google Groups...

Wy'east has two Google groups: "Wyeast" (for news and announcements about church events) and "Wyeast-chat" (an informal way for members and friends to share thoughts or events that are not official church happenings).

How do I subscribe to a group?

You can subscribe to a group via email or through the Google Groups web interface:

To subscribe to a group via email, send an email to [Groupname]+subscribe@googlegroups.com.

For example, if you wanted to join a group wyeast-chat, you'd send an email to:

wyeast-chat+subscribe@googlegroups.com.

To subscribe to a group through the web interface, simply log into your Google Account (or create one at Google.com; it's free and you don't need to have Google email) and visit the group of your choice.

Then click the **"Join this group"** link on the right-hand side of the page under "About this group."

Note: Wy'east groups are restricted membership, so the group owner must approve your subscription request for you to join.

Wy'east Helping Hands

We are continuing to build our list of folks who can help each other with almost any little jobs.

Do join us: offer your special abilities, and/or ask for what you need. Use your imagination!

In return for services you receive, you may contribute a donation to Wy'east.

To find out more, take a look at the poster on the welcome table, and ask Betsy M., coordinator, for information and sign-up forms, after Sunday services.

Contacting RE & the Board of Trustees

Contact Liana A., the Religious Education Committee Chair if you have questions about our children's programming at Wy'east.

If you have questions for the Wy'east Board of Trustees, you can send an email to wyeast-board@googlegroups.com or talk to any board member (David Tode O., Karl A., Dan E., Hank H., and Liana A.) on Sundays at church.

Hymn Singing Before Service



Reverend Susan attended another church earlier this year and found that as she walked in, everyone was singing even before the service started. It made for a very inviting, joyful atmosphere.

We talked about it and decided to give it a try. It meant giving up a prelude that in a more traditional worship space had been effective.

About 5 minutes before the service starts, we have been singing 3 hymns. We've done rounds, unfamiliar songs, and old favorites. The last hymn before the service is always an especially joyful song we can all participate in and raise the roof.

The feedback that we have received has been very positive. As adults, we don't often get the chance to lift our voices with others. This hymn sing allows us to sing together and make a joyful welcoming noise!

Ministerial Search Task Force

Due to other commitments, Karl A. has stepped down from the Task Force. Thank you, Karl, for all your time, thoughts, and support—we will miss you. The work of the Task Force is transitioning, so this is the perfect time for a member to move on as we regroup for the next phase. We are very pleased to announce that Debra T. has agreed to join the Task Force for the next leg of our journey. Thanks Debra!

Remember that there are a number of Wy'east Search Packets (the information package we send to potential ministers) available for you to review. Please see Mark A. after services to reserve a copy.

Newsletter News

The Wy'east Beacon is published bi-monthly. The deadline for the **September/October** issue submissions will be **Thursday, August 19th**. Please send articles, meeting/event dates, poetry, artwork, book recommendations, favorite spiritual practices, etc. to: wyeast-news-editor@googlegroups.com. If you have any questions, contact Sharai E. or send an email to the above address. Thanks!

To save paper and printing costs, we are printing fewer copies of the newsletter. We encourage you to view the newsletter online, at:
<http://wyeastuu.org/newsletter.php>

Worship Odds & Ends

On Sundays, it is helpful for long-time Wy'easters to **sit up front, in the middle, or to the far left** in order to be more welcoming to newcomers; it will make room for others who are new, people with children (who may need to make quick escapes!), or people who want to discreetly enter after the service begins. Thanks!

The Wy'east worship committee is always dreaming up **new ideas** for services, speakers and activities. To share ideas or help bring services to life, contact us at wyeast-worship@googlegroups.com or talk to or talk to Mark A., Brooke C., Katy L., Mary P., or Elizabeth S.

If your child wants to light the chalice during a worship service, please contact anyone from the worship committee.

Wy'east Special Collections



In response to the oil spill in the Gulf of Mexico, our Special Collections in July and August will go to two organizations actively involved in making a difference there. The first is **Oceana**, which has a regional office in Portland. From the website: "Oceana, founded in 2001, is the largest international organization focused solely on ocean conservation." Go to their site, click on "Our response to the oil spill," and read the "Gulf Oil Spill Response Center: Overview."



GREATER NEW ORLEANS FOUNDATION

The second is "The Gulf Coast Oil Spill Fund at the Greater New Orleans Foundation." They "help support organizations on the ground providing critical services to fishermen and their families." Short term "the Fund is making emergency grants to non-profit organizations responding to immediate needs." Long term "the Fund will help strengthen coastal communities against future environmental catastrophes and help them address the long term effects of the spill." See: www.gnof.org



Both of these organizations were identified by Alex R. Thank you for your work, Alex.

Before & After Worship Programming in July & August

If you have a programming idea that you would like to facilitate in the future, please contact Mark A.

JULY 4

- **Potluck Picnic** – See the article on page 2.

JULY 11

- **Social Hour** 11:30 am

JULY 18

- **Social Hour** 11:30 am

JULY 25

- **Social Hour** 11:30 am
- **Restaurant Adventure** 11:40 am



AUGUST 1

- **Potluck Lunch** - bring a dish to share right after the service.

AUGUST 8

- **Social Hour** 11:30 am

AUGUST 15

- **Social Hour** 11:30 am

AUGUST 22

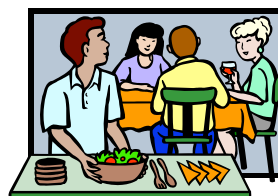
- **Social Hour** 11:30 am
- **Restaurant Adventure** 11:40 am

AUGUST 29

- **Social Hour** 11:30 am

UU Adventures in Eating

SUNDAY POTLUCK – Our potlucks will be held on **July 4th** at 10:30 am (see article on page 2) and **August 1st** at 11:30 am. Bring a dish to share.



RESTAURANT ADVENTURE – After our service on the **fourth Sunday** of each month, those who are interested gather for lunch at a local restaurant. It is an opportunity for lively and topical conversation, and for enjoying the bounty of wonderful restaurant food available in Portland.

Our group varies in size from as few as four to as many as 15, and often includes both adults and children. We announce the month's destination during the service, gather a list of interested congregants, and then call ahead to make reservations.

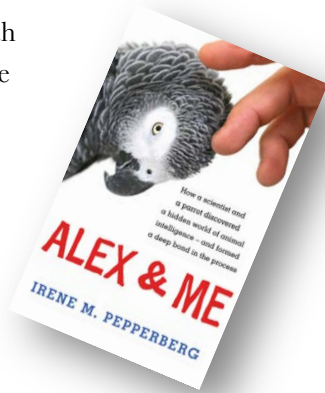
We try to find places with a variety of moderately-priced vegetarian and omnivorous menu items. We have some regular stops on the rotation, and we're always on the lookout for new restaurants to try.

Young Adults at Wy'east

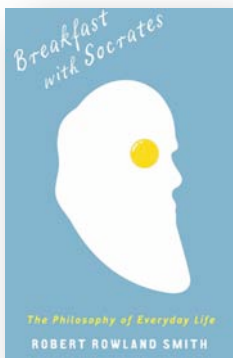
Young adults at Wy'east sometimes get together for spiritual discussions, volunteering and playing. To join in or suggest outings, contact Elizabeth S.

Book Reviews...

Alex and Me, by Irene Pepperberg. A gray parrot named Alex showed us – against long-prevailing scientific convictions – how birds can communicate with humans.. After being researched for years, Alex finally became famous and was included on a PBS Scientific American Frontiers “Pet Tech” program with Alan Alda (a sample can be seen/heard on the Internet, and I hope to obtain the whole program).



This account is a joy, and shows that we really never know everything and we share much more than we realize with the other animals –our communications with our pets are not just a joke, after all. Available at the Multnomah County Library (I found it in large print version).



Breakfast with Socrates, by Robert Rowland Smith. A small, intriguing and often humorous tour through what philosophers have thought about a variety of things –

some chapters are on waking up, working, seeing doctors, parents, playing hooky... everything. Smith lets us know that philosophy is just what people think, not some far out, useless stuff for professors. Lots of the

“thinkers” came up with ideas, but they definitely are often opposed and incomplete. This little book surprised me and made me chuckle. At the Multnomah County Library.

– *Betsy M.*

And a Poem...

SANDY, OREGON

**Shorty's Corner hugs the road to Mt. Hood,
watches the screaming traffic past Sandy
miss the moon, the hidden, over-berried,
neighbor's vines just a quiet mile back in,
the wet, forested, soft paths, all old barns
and up at dawn, after the coyotes**

**Or head north, toward the drum-singing river,
salmon gravel and marmots, the tree crowd
and fern families gathered for chapel --
it is evening, and silent vespers,
the dark, bruised blue of a dead deer, fallen
from a lichened cliff, and psalm to the touch**

Mark A.

2 MONTHS OF SUNDAYS

July

July 4 POTLUCK PICNIC AT GRANT PARK

Join us as we build community and enjoy a beautiful morning outside together. There will be no service at the Hollywood Senior Center on this day; instead we will gather at Grant Park at 10:30. We will play cooperative games and share our first Sunday potluck. There is more information about the picnic on page 2.

July 11 THE COURAGE TO LIVE LIFE

What does it mean to be a hero? We will explore how our UU faith can help us find the hero inside ourselves when the going gets tough. **Rev. Sarah Schurr**, a founding member of Wy'east, will lead this service. While a member of our community, she received her theological training at Marylhurst University and did her parish internship at the UU Fellowship of Corvallis, where she was ordained last fall. She currently works at Parkinson's Resources of Oregon and is a regular guest preacher around the district.

Service: 10:30 a.m.

Wy'Camp (Pre-K-8th Grade): Children attend the beginning of the service, and then go to Wy'Camp for a fun activity. Nursery care is also available for infants and toddlers.

Social Hour: Join us for refreshments after the service.

July 18 INTERGENERATIONAL SERVICE: THE WORLD OF FRIENDSHIP

Do you know what BFF means? Who is your best friend forever? What makes a good friend? Children and children-at-heart are invited to participate in today's intergenerational service on friendship -- with movement, clapping and other playfulness. Service led by **Elizabeth Suh**.

Service: 10:30 a.m.

Children will stay for this Intergenerational Service, but Nursery care is also available for infants and toddlers.

Social Hour: Join us for refreshments after the service.

July 25 WY'EAST PRESENTS...

This is a collaborative Readers' Theatre service in which Wy'east artists young and old tell spiritual stories from around the world.

Service: 10:30 a.m.

Children's Chapel (Pre-K-8th Grade): Children attend the beginning of the service, and then go to their own "Children's Chapel." Nursery care is also available for infants and toddlers.

Social Hour: Join us for refreshments after the service.

Restaurant Adventure: 11:40 a.m. Location to be announced during social hour.

August

August 1 IN PRAISE OF CRISIS

Periods of crisis can cause much unwanted distress in our lives. What else might times of crisis – personal or on a larger scale – bring with them? How do we relate crisis to our UU identity and our life in congregations? **Kristen Dillon** is a member and lay leader of the Mid-Columbia UU Fellowship in Hood River, where she lives with her family.

Service: 10:30 a.m.

Wy'Camp (Pre-K-8th Grade): Children attend the beginning of the service, and then go to Wy'Camp for a fun activity. Nursery care is also available for infants and toddlers.

First Sunday Brunch: 11:30 a.m. Bring a potluck dish to share.

August 8 POETRY CIRCLE

Read if you want, listen for sure and absolutely come! This will be a poetry circle in which you are invited to bring and share your favorite poems. Poetry speaks the language of the heart. What moves your heart? Led by **Mark Alter** and **Maureen Geraghty**.

Service: 10:30 a.m.

Wy'Camp (Pre-K-8th Grade): Children attend the beginning of the service, and then go to Wy'Camp for a fun activity. Nursery care is also available for infants and toddlers.

Social Hour: Join us for refreshments after the service.

August 15 WHERE WE LIVE

We all live in different kinds of places. Where we live reflects unique aspects of ourselves and impacts how we interact with the world around us. In this service, people from Wy'east will describe where they live – what it means to them, how their homes fit into their neighborhood and how this all speaks to them spiritually. Service led by Wy'east members and friends.

Service: 10:30 a.m.

Children's Chapel (Pre-K-8th Grade): Children attend the beginning of the service, and then go to their own "Children's Chapel." Nursery care is also available for infants and toddlers.

Social Hour: Join us for refreshments after the service.

August 22 INTERGENERATIONAL SERVICE: MOVING FREE

Moving Free is an invitation to get up and move however feels good to you. There's no right or wrong way to move – or be still. This will be an opportunity to release your spirit in a safe, nonjudgmental space. Led by Wy'east members and friends.

Service: 10:30 a.m.

Children will stay for this Intergenerational Service, but Nursery care is also available for infants and toddlers.

Social Hour: Join us for refreshments after the service.

Restaurant Adventure: 11:40 a.m. Location to be announced during social hour.

August 29 MUSIC THROUGH THE AGES

Music has been a part of most religions since ancient times. It has the magical power to soothe us during sorrow, inspire us in meditation and help us celebrate life. **Hank Hadaway** will present several selections from the world's religions and invite you to join in spirit and song.

Service: 10:30 a.m.

Wy'Camp (Pre-K-8th Grade): Children attend the beginning of the service, and then go to Wy'Camp for a special Pet-themed activity. Nursery care is also available for infants and toddlers.

Social Hour: Join us for refreshments after the service.



Wy'east Unitarian Universalist Congregation
Mailing address: 1916 NE 38th Ave.
Portland, OR 97212

Return Service Requested